

*Navigator*

NAVIGATOR SERIES  
**GUITARS & BASSES**

# Navigator

真のヴィンテージ・サウンドとは何なのか？

我々は常に問い続けてきた。

手に取った瞬間に感じる愛着、それを追及し続けたのだ。

- ❖ 同じ材などない。木には個性があるものだ。しかし、適した材を選んで使うことが Navigator には許されている。それはクラフトマンの喜びでもある。逆にそれは適したものがなければ作らないという選択をも生んでしまうのだが……。
- ❖ 指先が覚えている。機械に感触はわからない。データに残すことのできないわずかな膨らみ、窪みを探ることができるのは限られた職人だけだ。
- ❖ 塗装には、むろんニトロセルロースラッカーが使われる。研究の結果、塗装そのものにシークレットはなかった。隠されていたのは、熟練した技術だったのだ。





N-LP-480 CTM Black



N-LP-480 LTD Honey Sunburst



N-LP-480 LTD/P Gold

## N-LP-480 CTM

**BODY :** (Top) Hard Maple (Back) Honduras Mahogany w/White&Black Ply Binding  
**NECK :** Honduras Mahogany  
**GRIP SHAPE :** U  
**FINGERBOARD :** Ebony, 22frets w/White Binding  
**RADIUS :** 305R  
**SCALE :** 624mm  
**NUT :** Bone (43mm)  
**FRET :** #213  
**INLAY :** Pearl Block  
**NECK JOINT :** Set-neck (deep joint)  
**TUNER :** GOTOH SG301-04  
**PICKUPS :** (Neck) Seymour Duncan SH-55n (Bridge) Seymour Duncan SH-55b  
**CONTROLS :** Neck Volume & Tone, Bridge Volume & Tone Toggle PU Selector  
**BRIDGE :** Vintage type TUNE-MATIC & GE101A  
**FINISH :** Lacquer  
**PRICE :** 504,000yen (Include TAX) with Hard Case (HC-250NLP)



## N-LP-480 LTD

**BODY :** (Top) Hard Maple (Back) Honduras Mahogany w/Ivory Binding  
**NECK :** Honduras Mahogany  
**GRIP SHAPE :** U  
**FINGERBOARD :** Honduras Rosewood, 22frets w/Ivory Binding  
**RADIUS :** 305R  
**SCALE :** 624mm  
**NUT :** Bone (43mm)  
**FRET :** #213  
**INLAY :** Pearlloid Dish  
**NECK JOINT :** Set-neck (deep joint)  
**TUNER :** GOTOH SD90-SL  
**PICKUPS :** (Neck) Seymour Duncan SH-55n (Bridge) Seymour Duncan SH-55b  
**CONTROLS :** Neck Volume & Tone, Bridge Volume & Tone Toggle PU Selector  
**BRIDGE :** Vintage type TUNE-MATIC & GE101A  
**FINISH :** Lacquer  
**PRICE :** 504,000yen (Include TAX) with Hard Case (HC-250NLP)



## N-LP-480 LTD/P

**BODY :** (Top) Hard Maple (Back) Honduras Mahogany w/Ivory Binding  
**NECK :** Honduras Mahogany  
**GRIP SHAPE :** U  
**FINGERBOARD :** Honduras Rosewood, 22frets w/Ivory Binding  
**RADIUS :** 305R  
**SCALE :** 624mm  
**NUT :** Bone (43mm)  
**FRET :** #213  
**INLAY :** Pearlloid Dish  
**NECK JOINT :** Set-neck (deep joint)  
**TUNER :** GOTOH SD90-SL  
**PICKUPS :** (Neck) Seymour Duncan SP90-1n (Bridge) Seymour Duncan SP90-1b  
**CONTROLS :** Neck Volume & Tone, Bridge Volume & Tone Toggle PU Selector  
**BRIDGE :** Vintage type TUNE-MATIC & GE101A  
**FINISH :** Lacquer  
**PRICE :** 504,000yen (Include TAX) with Hard Case (HC-250NLP)



## N-FV-440 LTD

**BODY :** Mahogany  
**NECK :** Mahogany  
**GRIP SHAPE :** U  
**FINGERBOARD :** Rosewood, 22frets  
**RADIUS :** 305R  
**SCALE :** 628mm  
**NUT :** Bone (40mm)  
**FRET :** #213  
**INLAY :** Pearloid Dot  
**NECK JOINT :** Set-neck (deep joint)  
**TUNER :** GOTOH SD90-SL  
**PICKUPS :** (Neck) Seymour Duncan SH-1n  
 (Bridge) Seymour Duncan SH-4  
**CONTROLS :** Neck Volume, Bridge Volume,  
 Master Tone, Toggle PU Selector  
**BRIDGE :** Vintage type TUNE-MATIC & GE101A  
**FINISH :** Lacquer  
**PRICE :** 462,000yen (Include TAX)  
 with Hard Case (HC-300NFV/F)



N-FV-440 LTD Black

## N-SG-450 LTD

**BODY :** Honduras Mahogany  
**NECK :** Honduras Mahogany  
**GRIP SHAPE :** U  
**FINGERBOARD :** Honduras Rosewood, 22frets  
 w/White Binding  
**RADIUS :** 305R  
**SCALE :** 624mm  
**NUT :** Bone (43mm)  
**FRET :** #213  
**INLAY :** Pearloid Dish  
**NECK JOINT :** Set-neck (deep joint)  
**TUNER :** GOTOH SD90-SL  
**PICKUPS :** (Neck) Seymour Duncan APH-1n  
 (Bridge) Seymour Duncan APH-1b  
**CONTROLS :** Neck Volume & Tone,  
 Bridge Volume & Tone,  
 Toggle PU Selector  
**BRIDGE :** Vintage type TUNE-MATIC & GE101A  
**FINISH :** Lacquer  
**PRICE :** 472,500yen (Include TAX)  
 with Hard Case (HC-250NSG)



N-SG-450 LTD Cherry Red

## N-EX-440 LTD

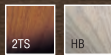
**BODY :** Mahogany  
**NECK :** Mahogany  
**GRIP SHAPE :** U  
**FINGERBOARD :** Rosewood, 22frets  
**RADIUS :** 305R  
**SCALE :** 628mm  
**NUT :** Bone (42mm)  
**FRET :** #213  
**INLAY :** Pearloid Dot  
**NECK JOINT :** Set-neck  
**TUNER :** GOTOH SD91-05M  
**PICKUPS :** (Neck) Seymour Duncan SH-1n  
 (Bridge) Seymour Duncan SH-4  
**CONTROLS :** Neck Volume, Bridge Volume,  
 Master Tone, Toggle PU Selector  
**BRIDGE :** Vintage type TUNE-MATIC & GE101A  
**FINISH :** Lacquer  
**PRICE :** 462,000yen (Include TAX)  
 with Hard Case (HC-300EXP)



N-EX-440 LTD Old Natural

## N-ST-380/ASM

BODY : Swamp Ash  
 NECK/FINGERBOARD : Hard Maple 1P, 21frets  
 GRIP SHAPE : V RADIUS : 240R  
 SCALE : 648mm NUT : Bone (42mm)  
 FRET : #214 INLAY : Acrylic Dot  
 NECK JOINT : Bolt-on  
 TUNER : GOTOH SD91-05M  
 PICKUPS : (Neck) Seymour Duncan  
 ANTIQUITY Texas Hot  
 (Middle) Seymour Duncan  
 ANTIQUITY Texas Hot  
 (Bridge) Seymour Duncan  
 ANTIQUITY Texas Hot  
 CONTROLS : Master Volume,  
 Middle Tone, Neck Tone  
 5-WAY Lever PU Selector  
 BRIDGE : GOTOH GE101TS (Iron block)  
 FINISH : Lacquer  
 PRICE : 399,000yen (Include TAX)  
 with Hard Case (HC-250NTS)



N-ST-380/ASM 2 Tone Sunburst



## N-ST-380/ALM

BODY : Alder  
 NECK/FINGERBOARD : Hard Maple 1P, 21frets  
 GRIP SHAPE : V RADIUS : 240R  
 SCALE : 648mm NUT : Bone (42mm)  
 FRET : #214 INLAY : Acrylic Dot  
 NECK JOINT : Bolt-on  
 TUNER : GOTOH SD91-05M  
 PICKUPS : (Neck) Seymour Duncan  
 ANTIQUITY Texas Hot  
 (Middle) Seymour Duncan  
 ANTIQUITY Texas Hot  
 (Bridge) Seymour Duncan  
 ANTIQUITY Texas Hot  
 CONTROLS : Master Volume,  
 Middle Tone, Neck Tone  
 5-WAY Lever PU Selector  
 BRIDGE : GOTOH GE101TS (Iron block)  
 FINISH : Lacquer  
 PRICE : 399,000yen (Include TAX)  
 with Hard Case (HC-250NTS)



N-ST-380/ALM Black



## N-TE-380/ASR

BODY : Swamp Ash NECK : Hard Maple  
 GRIP SHAPE : U  
 FINGERBOARD : Honduras Rosewood,  
 21frets  
 RADIUS : 240R SCALE : 648mm  
 NUT : Bone (42mm) FRET : #214  
 INLAY : Clay Type Dot  
 NECK JOINT : Bolt-on  
 TUNER : GOTOH SD91-05M  
 PICKUPS : (Neck) Seymour Duncan  
 ANTIQUITY II  
 "Twang Rhythm"  
 (Bridge) Seymour Duncan  
 ANTIQUITY II  
 "Twang Lead"  
 CONTROLS : Master Volume,  
 Master Tone,  
 3-WAY Lever PU Selector  
 BRIDGE : Vintage type TE-3WAY SPIRAL  
 FINISH : Lacquer  
 PRICE : 399,000yen (Include TAX)  
 with Hard Case (HC-250NTS)

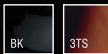


N-TE-380/ASR Honey Blend



## N-TE-400 CTM

BODY : Alder w/White Binding  
 NECK : Hard Maple GRIP SHAPE : U  
 FINGERBOARD : Honduras Rosewood, 21fret  
 RADIUS : 240R SCALE : 648mm  
 NUT : Bone (42mm) FRET : #214  
 INLAY : Clay Type Dot NECK JOINT : Bolt-on  
 TUNER : GOTOH SD91-05M  
 PICKUPS : (Neck) Seymour Duncan  
 ANTIQUITY II  
 "Twang Rhythm"  
 (Bridge) Seymour Duncan  
 ANTIQUITY II  
 "Twang Lead"  
 CONTROLS : Master Volume, Master Tone,  
 3-WAY Lever PU Selector  
 BRIDGE : TE-3WAY SPIRAL  
 FINISH : Lacquer  
 PRICE : 420,000yen (Include TAX)  
 with Hard Case (HC-250NTS)



N-TE-400 CTM Black



## N-ST-380/ALR

BODY : Alder NECK : Hard Maple  
 GRIP SHAPE : U  
 FINGERBOARD : Honduras Rosewood, 21frets  
 RADIUS : 240R SCALE : 648mm  
 NUT : Bone (42mm) FRET : #214  
 INLAY : Clay Type Dot NECK JOINT : Bolt-on  
 TUNER : GOTOH SD91-05M  
 PICKUPS : (Neck) Seymour Duncan  
 ANTIQUITY II "Surfer"  
 (Middle) Seymour Duncan  
 ANTIQUITY II "Surfer"  
 (Bridge) Seymour Duncan  
 ANTIQUITY II "Surfer"  
 CONTROLS : Master Volume,  
 Middle Tone, Neck Tone  
 5-WAY Lever PU Selector  
 BRIDGE : GOTOH GE101TS (Iron block)  
 FINISH : Lacquer  
 PRICE : 399,000yen (Include TAX)  
 with Hard Case (HC-250NTS)



N-ST-380/ALR Vintage White



## N-TE-380/ASM

BODY : Swamp Ash  
 NECK/FINGERBOARD : Hard Maple 1P, 21frets  
 GRIP SHAPE : V RADIUS : 240R  
 SCALE : 648mm NUT : Bone (42mm)  
 FRET : #214 INLAY : Acrylic Dot  
 NECK JOINT : Bolt-on  
 TUNER : GOTOH SD91-05M  
 PICKUPS : (Neck) Seymour Duncan  
 ANTIQUITY "TE Rhythm"  
 (Bridge) Seymour Duncan  
 ANTIQUITY "TE Lead"  
 CONTROLS : Master Volume, Master Tone,  
 3-WAY Lever PU Selector  
 BRIDGE : Vintage type TE-3WAY BRASS  
 COLOR : Butter Scotch Blond  
 FINISH : Lacquer  
 PRICE : 399,000yen (Include TAX)  
 with Hard Case (HC-250NTS)



N-TE-380/ASM Butter Scotch Blond





N-JB-380 LTD Vinatge White



N-JB-400 LTD Black

※ピックアップフェンスは付属です。



N-PB-360 LTD 3 Tone Sunburst

## N-JB-380 LTD

**BODY :** Alder  
**NECK :** Hard Maple  
**GRIP SHAPE :** VINTAGE-U  
**FINGERBOARD :** Honduras Rosewood, 20frets  
**RADIUS :** 240R  
**SCALE :** 864mm  
**NUT :** Bone (38mm)  
**FRET :** #214  
**INLAY :** Clay Type Dot  
**NECK JOINT :** Bolt-on  
**TUNER :** GOTOH GB-2/9  
**PICKUPS :** (Neck) Seymour Duncan ANTIQUITY JB-n  
 (Bridge) Seymour Duncan ANTIQUITY JB-b  
**CONTROLS :** Neck Volume, Bridge Volume, Master Tone  
**BRIDGE :** Vintage Style Spiral Saddle  
**FINISH :** Lacquer  
**PRICE :** 399,000yen (Include TAX)  
 with Hard Case (HC-250NPI)



## N-JB-400 LTD

**BODY :** Swamp Ash  
**NECK/FINGERBOARD :** Hard Maple 1P, 20fret w/Binding  
**GRIP SHAPE :** VINTAGE-U  
**RADIUS :** 240R  
**SCALE :** 864mm  
**NUT :** Bone (38mm)  
**FRET :** #214  
**INLAY :** Acrylic Block  
**NECK JOINT :** Bolt-on  
**TUNER :** GOTOH GB-2  
**PICKUPS :** (Neck) Seymour Duncan ANTIQUITY II "Jive"  
 (Bridge) Seymour Duncan ANTIQUITY II "Jive"  
**CONTROLS :** Neck Volume, Bridge Volume, Master Tone  
**BRIDGE :** Vintage Style  
**FINISH :** Lacquer (Body)  
**PRICE :** 420,000yen (Include TAX)  
 with Hard Case (HC-250NPI)



## N-PB-360 LTD

**BODY :** Alder  
**NECK :** Hard Maple  
**GRIP SHAPE :** VINTAGE-U  
**FINGERBOARD :** Honduras Rosewood, 20frets  
**RADIUS :** 240R  
**SCALE :** 864mm  
**NUT :** Bone (42mm)  
**FRET :** #214  
**INLAY :** Clay Type Dot  
**NECK JOINT :** Bolt-on  
**TUNER :** GOTOH GB-2/9  
**PICKUP :** Seymour Duncan ANTIQUITY PB  
**CONTROLS :** Volume, Tone  
**BRIDGE :** Vintage Style Spiral Saddle  
**FINISH :** Lacquer  
**PRICE :** 378,000yen (Include TAX)  
 with Hard Case (HC-250NPI)

